

GALLERY news

The Art Society of Tasmania Inc. ABN 73 537 464 400



Patron: Her Excellency, The Honourable Barbara Baker
Governor of Tasmania

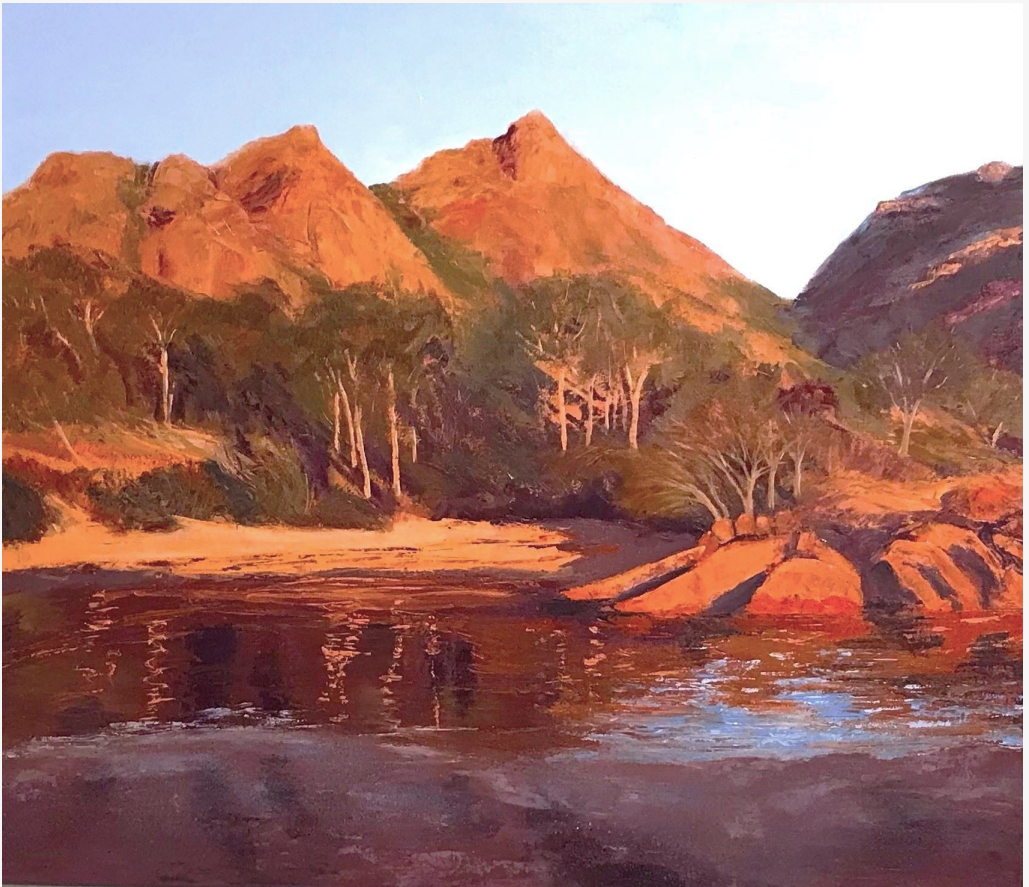
Vice Patrons: Lord Mayor of Hobart Cr. Anna Reynolds and Mr Rob Valentine MLC

ISSN NO: 2206-3722

Newsletter No 95

July-Aug-Sept 2023

139th Annual Exhibition and more....



'Late Afternoon Light on the Hazards' by Vicki Chapman, oil

Winner Best Overall Work, Artery Prize, 139th Annual Exhibition

Stay up-to-date at www.artstas.com.au



Contents

From the President	2
A Sense of Place	3
Square 4	-5
Scene Through the Lens	6
139th Annual	7-11
Three Months at a Glance	12
2023 Exhibition Calendar	13
Library News	14
Membership, Contact & Payment Details	15
Society Workshops	16-17
Notices	18-19
Artist Profile - Wendy Galloway	20-22
Member News	23
Scene Through the Lens Opening	24
Exhibition Notices	25 -27
Sponsors	28

Acknowledgements

Photographs:

Helen Barrett, Nikki Munro

Printed by Monotone, Hobart.

From the President

Our invited artists Amber Koroluk-Stephenson and Jo Chew transformed the Lady Franklin Gallery in June with their exhibition Figment. This exhibition asked us to reflect on the history of the Lady Franklin Gallery and the story of the Franklins who led to its creation. This was a challenging exhibition which brought new many new art lovers and collectors to our gallery as we seek to connect with the wider arts community and be recognised as a place to purchase contemporary art.

This wider connection with community was continued in partnership with the Wellington Park Management Trust who sponsored a prize for the best work depicting an aspect of Mount Wellington in the July exhibition, A Sense of Place. Our members embraced this exhibition, and it highlighted the skill of our many landscape artists. Congratulations must go to Mieke Vermeulen who won the prize for her beautiful watercolour of Vanishing Tarn. I must also mention the beautiful handmade book created by Annie Wilson for this exhibition which was displayed at the front of the gallery waiting for someone to fill with their precious stories.

It was with great pride that I welcomed Her Excellency Barbara Baker, Governor of Tasmania to open our 139th Annual Exhibition. I looked around the gallery as she spoke about the Art Society and fully appreciated the talent of our members. The Long Gallery looks amazing, and it was wonderful to see so many people present at the opening.

Our last members exhibition this year is Loose and Lively, a fitting exhibition to create for during spring. I'm hoping to spend a day outside in the sunshine painting for this exhibition, there may even be some apple blossom embedded in the paint by the time I'm done.

I look forward to seeing you in the Gallery.

Nikki Munro



July Exhibition - A SENSE OF PLACE

The 30th Anniversary of the Wellington Park Art Prize was celebrated during July at the gallery with the Art Society **Sense of Place** exhibition. The acquisitive art prize was won by Mieke Vermeulen with her 'Vanishing Tarn' watercolour, and both Pauline Johnson and Wendy Galloway gained Highly Commended awards.



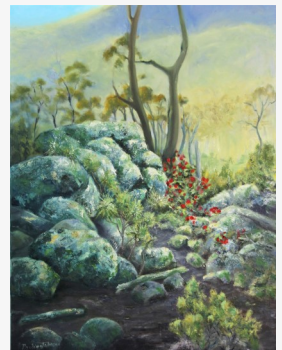
The beautiful handmade book by Annie Wilson



Wendy Galloway
'The Mountain'
collograph print
Highly Commended



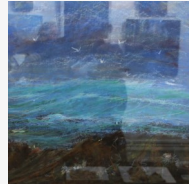
Mieke Vermeulen receives the
acquisitive Art Prize from the
Wellington Park Management Trust

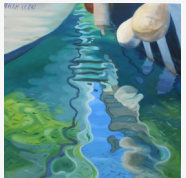
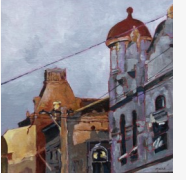
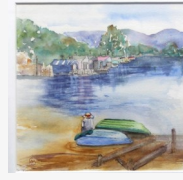
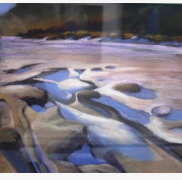
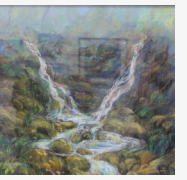
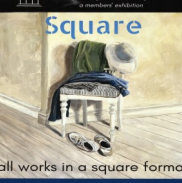
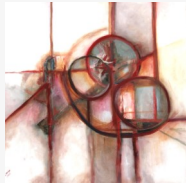
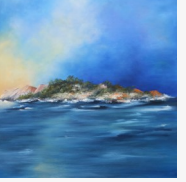
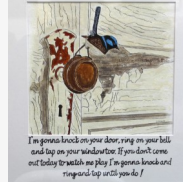
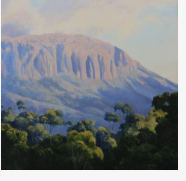
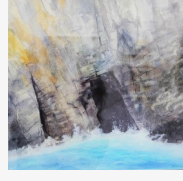
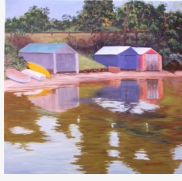
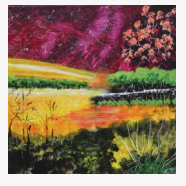


Pauline Johnson
'Waratah Blooming
on kunanyi' - oil
Highly Commended

August Exhibition - SQUARE

The Art Society of Tasmania was proud to present a wonderful collection of artworks from its members all in a square format. The square format presents complex compositional challenges for every artist and all our members had risen to the challenge and created a wondrous body of work that was absolutely delightful. Judy Griffiths our coordinator introduced the opening speaker Skye Targett, Assistant Curator of Hadley's Art Prize.





The Art Society of Tasmania presents its inaugural exhibition of photography.

Often overlooked as an art form, photography is something that everyone can engage in. Who doesn't carry a phone in their pocket, capable of taking magnificent images? A camera is a tool, just like a paint brush. Both are used in the production of images, but it is the person using those tools and not the tools themselves that create the image.

The Society recognises photography as an art form and has great pleasure in presenting examples of work from a cross-section of its photographer members.

Visit the Lady Franklin Gallery and see this wonderful exhibition of work.

Take a walk into the ancient rainforests of Tasmania with **Peter Walsh**, as he gives a graphic interpretation of some of the worlds oldest, living trees that speak to us through his lens, and make us wonder at natures magnificent forms.

Continue outside of the forests with **Steve Roden** and witness images of dramatic light and weather in the Lake St Claire National Park, descending to coastal scenery and then to the warmth and colour of European Street scenes.

Return then to Tasmania and witness **Andy Szollosi's** use of older technology, in the form of film, using both 35 millimetre and full-frame cameras. Andy takes us once again to the wilderness of Tasmania, to places that demand a high degree of physical fitness to access, especially when carrying a Hasselblad camera.

Kevin Smith will engage you with yet more, unique interpretations of our wilderness areas, demonstrating what can be achieved with effort and insight. Kevin commits his work to canvass, creating a strong link to the painterly arts. We can all take photographs, but the ability to see the scene and to impose a personal interpretation, is what makes this exhibition a fine example of the art of photography.

Lady Franklin created the gallery that now bears her name, to bring art to the people of Tasmania. Whilst photography was in its genesis in her lifetime, it is doubtful that photographic work would have been seen in her gallery. Her legacy continues and she would have been pleased to see this new art form on display. [See opening page 24.](#)

Andy Szollosi



139th Annual Exhibition

Once again members of the Art Society of Tasmania have displayed their artistic skill and creativity in the 139th Annual Exhibition. Held in the Long Gallery, Salamanca the Annual Exhibition is an opportunity for members to exhibit their works in the creative centre of Hobart. This year we had a total of 150 works on display.

The exhibition was opened by Her Excellency, Barabara Baker, Governor of Tasmania, who spoke of the history of the Lady Franklin Gallery. The opening was well attended by our members, the wider arts community, and by our Vice Patron Rob Valentine MLC.

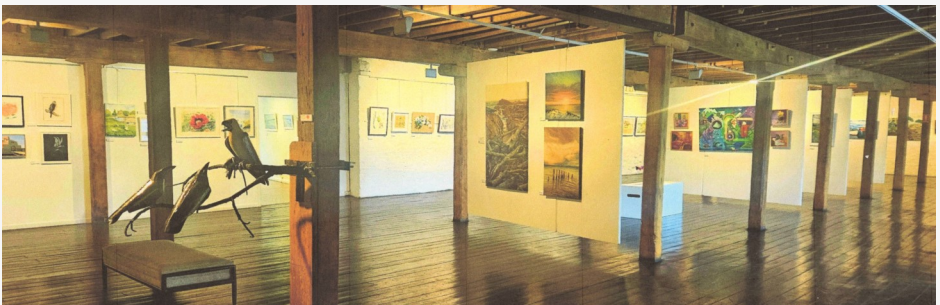
Awards were presented during the evening, and I must thank our generous sponsors, Artery, Adart, ARC Framerite, Phil's Framing, Just Frames, Wagner Framemakers and Lauder and Howard. Please continue to support them when you can.

Thank you to the judges, Katherine Cooper, Hannah Blackmore and Jock Young who spent several hours in the Gallery closely inspecting the work and deliberating over who should be awarded prizes. The works are judged prior to the labels being affixed to them so the judges have no idea who created the work.

Vicki Chapman's work *'Late Afternoon Light on the Hazards'* was awarded the Best Overall Artwork in oil. This is a beautiful work and was created using a new technique by Vicki who was inspired by the thick paint and pallet knife work of Jennifer Riddle. One of the joys of being an artist is to see how other artist work and have a go using their techniques, trying something new invigorates our work as we continue to develop our artistic practice. Thank you to Artery for their \$1000 voucher. I'm sure Vicki will put it to good use.

Sally James' work, reduction linocut in oil *'Looking Down, Glacier Rock, Central Highlands'* a clever composition, was awarded the Best Use of Medium with the prize of \$500 presented by the Art Society.

There were five Highly Commended and one Special Mention. cont'd



139th Annual Exhibition

I'd like to thank everyone who contributed to the success of the Annual Exhibition, our artists, our hangers, and all those who volunteered to sit in the gallery during the exhibition. Special thanks to Vicki Chapman, it is her drive and enthusiasm which brings the exhibition together and to Carol Sheppard who curated the exhibition.

Nikki Munro

See Art Society website menu under IMAGE GALLERY - Exhibition Albums www.artstas.com.au for further photographs of the winners and the Long Gallery display.

Front cover image
ARTERY WINNER FOR BEST OVERALL WORK

Artist: Vicki Chapman
Title: *'Late Afternoon Light on the Hazards'*
Medium: oil

Judges Comments: *"Feel the warmth. Excellent composition. Blue reflection in water is superb." Application of paint is masterful."*



Sally James with our Governor

BEST USE OF MEDIUM

Artist: Sally James
Title: *'Looking Down, Glacier Rock, Central Highlands.'*
Medium: Reduction linocut in Oil

Judges Comments:
"Simple yet sophisticated. Masterful layering. Clever composition."



139th Annual Exhibition

HIGHLY COMMENDED

Artist: Maggie Rees

Title: 'Little things that matter'

Medium: Oil and ink

Judges comments:

*"Beautiful depth and technical skills, in particular the glazing.
Lovely use of colour."*



HIGHLY COMMENDED

Artist: Susan Bleakley

Title: 'Dark Reflections- Sarah Island'

Medium: Acrylic

Judges Comments:

"Stunning painting you can enjoy from afar. Great use of negative space. Love the splashes of white paint. Strong composition and colour palette."



HIGHLY COMMENDED

Artist: Rick Crossland

Title: 'Adamsons Peak from Gardners Bay'

Medium: Oil on canvas board

Judges Comments:

*"Excellent palette and technique. Small and powerful.
A strong composition"*



139th Annual Exhibition

HIGHLY COMMENDED

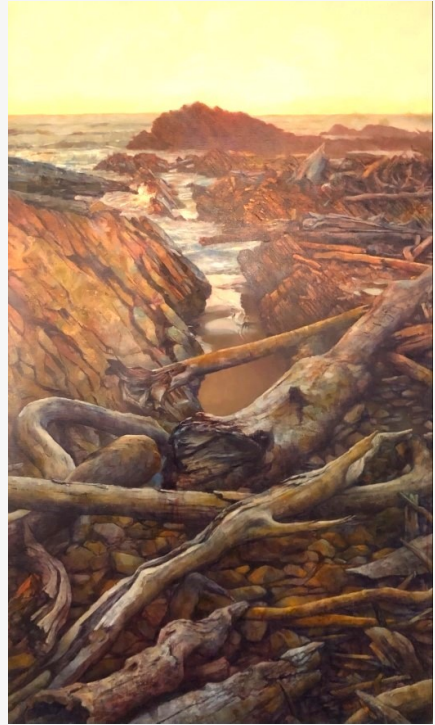
Artist: Brad Quinn

Title: 'Last Light, Arthur River'

Medium: Oil on linen

Judges comments:

"Skilful technique, tonal values are a pleasure. Timeless quality. Strong composition and diagonal perspective and negative space in the sand."



HIGHLY COMMENDED

Artist: Judy Griffiths

Title: 'Interconnectedness and Belonging'

Medium: Acrylic

Judges comments: *"A clever composition. The glass bowl is outstanding. An ambitious perspective that works. Love the paintbrushes"*



139th Annual Exhibition



SPECIAL MENTION

Artist: Paul Wilson

Title: 'Standoff'

**Medium: Stone and
corten steel**

Judges comments:

"A strong visual, technically brilliant piece that has a strong composition and energy and fun. Exceptional branch."



The mighty hanging team

THREE MONTHS AT A GLANCE

Workshops and Events in the next 3 months

SEPTEMBER

September Exhibition: 'Photographers - Scene through the Lens'

Friday 1st	Opening of 'Scene Through the Lens' Exhibition 6pm LFG
Monday 4 th	Botanical Art Group
Tuesday 5 th	Watercolour Group
Wed 6th	Oil Painting Groups
Monday 18 th	Botanical Art Group
Tuesday 19 ^h	Watercolour Group
Wed 20th	Oil Painting Groups
Wed 20th	Photographers talk Peter Walsh 6pm LFG

OCTOBER

October Exhibition: 'Loose and Lively' members exhibition

Sunday Oct 1st	Collection of 'Scene Though the Lens' and Delivery of 'Loose and Lively'
Monday 2nd	Botanical Art Group
Tuesday 3rd	Watercolour Group
Wednesday 4th	Oil Painting Groups
Friday 6th	Opening of 'Loose and Lively' Exhibition 6pm LFG
Monday 16th	Botanical Art Group
Tuesday 17th	Watercolour Group
Wed 18th	Oil Painting Groups
Sunday 29th	Collection of 'Loose and Lively' and Delivery 'Love This State'

NOVEMBER

November Exhibition: 'Love This State' feature artists exhibition

Friday 3rd	Opening of 'Love This State' exhibition 6pm LFG
Saturday 4th	Rick Crossland plein air workshop Richmond 9am to 1pm
Monday 6th	Botanical Art Group
Tuesday 7th	Watercolour Group
Wed 8th	Oil Painting Groups
Sat 11th, 18th, 25th	Rick Crossland plein air workshop Richmond 9am to 1pm
Monday 20th	Botanical Art Group
Tuesday 21st	Watercolour Group
Wed 22nd	Oil Painting Groups'
Sunday 26th	Collection of 'Love This State' and Delivery of Gemma Black 'The Boats of Humanity'

DECEMBER Exhibition: Gemma Black 'The Boats of Humanity'

Art Society Exhibition Calendar 2023

EXHIBITION CALENDAR 2023

Month	Exhibition	Opening	Change-over After 4pm
JANUARY <i>Hours 11am - 4pm</i>	Members Urban Light Dec exhibition cont.		Collected Jan 8 th
JANUARY	Members Exhibition (3 weekends) BODY and SOUL – figures	BBQ Opening Sat 14 th Jan	Delivered 8 th Jan Collected 29 th Jan
Water Ways	Water Ways , Long Gallery Interpretations of water in all its forms, any medium Open to public Fri 10 – 19 Feb Aust Wooden Boat Festival– F 10 -M 13 Feb	Thurs 16 th Feb 6.30pm Prize Announcement Event	Delivered 7 th Feb Collected 19 th Feb
FEBRUARY	Feature Artists - OUR COLLECTION Featuring works from the Art Society's art collection		Delivered 29 th Jan Collected 26 th Feb
MARCH	Members Exhibition EVOLVING DIVERSITY Works by NEW MEMBERS of the AST Glover Exhibition Trip, Sunday 19th	Sat 4 th March 11am	Delivered 26 th Feb Collected 26 th March
APRIL <i>Easter 7th to 11th April</i>	Feature Artist JOAN HUMBLE OUR BEAUTIFUL TASMANIA	Sat 1st April 11am	Delivered 26 th March Collected 30 th April
MAY	Members Exhibition WORKS on PAPER Works in any medium on or with paper	Sat 6 th May 11am	Delivered 30 th April Collected 28th May
JUNE	Invited Artists AMBER KOROLUK-STEPHENSON and JO CHEW FIGMENT	Sat 3rd June 11am	Delivered 28th May Collected 25 th June
JULY	Members Exhibition A SENSE of PLACE Includes \$1000 acquisitive art prize for best depiction of an aspect of Mt Wellington.	Sat 1 st July 11am	Delivered 25th June Collected 30th July
AUGUST	Members Exhibition SQUARE All works in a square format, any size, any medium	Sat 5 th Aug 11am	Delivered 30th July Collected 27 th Aug
SEPTEMBER	Feature Artists The Photographers SCENE THROUGH THE LENS	Fri 1 st September 6pm	Delivered 27 th Aug Collected 1 st Oct
SEPTEMBER 5 th – 17th	139th Annual Exhibition Long Gallery, Salamanca Best works created in the last year	Fri 8 th Sept 6pm	Delivered Tues 5 th 10am -1pm Collected SUN 17 th 4 -6pm
OCTOBER	Members Exhibition LOOSE and LIVELY	Fri 6th Oct 6pm	Delivered 1 st Oct Collected 29 th Oct
NOVEMBER	Feature Artists KAYE VOLKMAN and ELIZABETH HUNN LOVE THIS STATE	Fri 3rd Nov 6pm	Delivered 29 th Oct Collected 26 th Nov
DECEMBER	Feature Artist GEMMA BLACK THE BOATS OF HUMANITY	Sat 2nd 11am Continues until 7 th Jan 2024	Delivered 26 th Nov Collected 7 th Jan 2024

A review of two new publications and more :

HANDBUILT A Modern Potters Guide to Handbuilding with Clay - by **Lilly Maetzig** is the maker behind Mae Ceramics originally from Christchurch, New Zealand. Covering the oldest and most traditional ways to make pots, *Hand Built* is a beginner's guide to hand building with clay – no pottery wheel required. This book will teach you the building blocks to working with clay and how to apply a professional finish to your pots including decoration, glazing and firing techniques. Learn how to create a collection of 23 stylish homeware designs using the three core techniques: coiling, pinching and slab building. 231pp.

THIS BUSINESS OF ART How to Become a Professional Artist - **Hannah Blackmore** This Business of Art a business book for emerging artists. We are living in the most exciting time in history to be an artist. The internet has revolutionised our possibilities and expanded our potential. Today, we can promote our work for free, grow our audience, and sell our work directly to collectors. However, in order to make it work, we need to learn the basics of business, marketing and sales, and this book will show you how. Written by practicing artist Hannah Blackmore, This Business of Art demonstrates how to increase your productivity, nurture your creativity and grow your business. 240pp.

Hannah has an exhibition at SAC Studio 235 until 30th Sept.



Extra donations
from Roger Imms
library for
members to avail
themselves of to
purchase or for
free.
See page 19

For new members - record your loans and sign out in the **BIG BLACK BOOK** at the desk. Please **sign back in when returning** your books - leave in the **BIG YELLOW BOX** in the library. Loan time is four weeks. Please contact the library chick on 0408295118 or email csmeech@bigpond.com if you have any book suggestions or want extension time. There are latest artist magazines for sitters to peruse at the desk. Happy borrowing! *Susie Meech*

MEMBERSHIP NEWS

It is always great to welcome people to the Art Society of Tasmania and even better when we can see their work in the following member's exhibitions. Our new exhibiting members are Rachel Harris, Gloria Elphinstone and Hilary Clared and new Social members Dorothy McCartney and Steve Meyers.

Please make yourself known to these people when the opportunity arises, as it is always great to see new faces in our gallery.

We welcome our new members and look forward to a long and happy association.

Zane Yasuda

Roster Volunteers

Please go online www.artstas.com.au and book under Members in the menu - it really is very easy. Alternatively, text me on 0418 525 632 with your details and preferred session and I will add you to the roster.

And let's not forget the rest of the year.....

You are also now able to book to sit at the gallery for any exhibition during the year. It won't be long until we will all be thinking about the Loose and Lively Exhibition in October so now is the time to check your diaries and availability. *Georgie Cane*

CONTACT AND PAYMENT DETAILS

Secretary and all enquiries	Leanne Halls	PO Box 403, Lenah Valley, Tasmania 7008 The secretary info@artstas.com.au
Roster	Georgina Cane	georgiecane@gmail.com
Gallery News	Susie Meech	csmeech@bigpond.com
Library	Susie Meech	csmeech@bigpond.com
Facebook & Instagram	Helen Barrett	helenbarrett61@gmail.com
Website	The Art Society of Tasmania	www.artstas.com.au
Lady Franklin Gallery	0490 910 229	Please leave a message
Payments: Membership, workshops	The Art Society of Tasmania	Direct Debit (please identify any payments) BSB 067005 A/C 28005288 Payments can also be made in person at the gallery by cash, credit card or cheque

Painting from Life

Plein Air Workshop, Richmond 2023

Saturday 4th, 11th, 18th, 25th **November** 9.00am-1.00pm
(non-members are welcome to register)



Build confidence in oil painting 'plein air'* over four sessions at various locations near historic Richmond Village.

Experienced Tasmanian plein air artist, Rick Crossland (www.rickcrosslandart.com, Instagram: @rckcrossland) will share his knowledge and skills through demonstrations and instruction.

This workshop is best suited to artists with some prior oil painting experience keen to develop their skills and confidence in painting from life outside. Numbers will be limited to 9 (minimum of 5).

**En plein air is a French phrase meaning "in the open air". It describes the process of painting a subject outdoors, though the phrase has also been applied to the resulting works.*

^The plein air painting experience includes painting outside in all weather conditions and will involve some walking and carrying of equipment to painting locations. In case of extreme weather alternative interior or still life activities at a venue in the Richmond area will be offered or an alternative date will be offered.

Cost: \$220 Members, \$250 non-members. Please register online and pre-pay.

Additional information and a pre-workshop meeting will be arranged for all those who have registered to discuss equipment and practical considerations.

NESTING BIRDS - Ceramic Workshop

**Make a seated clay bird in October
with Eve Howard \$160 members \$175 non-members**

Eve Howard is a ceramic sculptor, her poetic pieces resonate with sincerity, warmth and a delightful simplicity.

This fantastic workshop is designed for both beginners and experienced potters. Eve will guide you on the use of different hand tools and how to realise your chosen bird form.

To create your birds, you will be given a highly textured Buff Raku clay that is perfect for hand building your own feathered friend. You will be shown a variety of hand building techniques and learning how to apply decorative underglazes.

During this all day workshop, all materials will be supplied and your fired piece will be ready for pick up within a month of creation.



**Notification of dates to come via
AST website and email - stay tuned.**



REPORT ON LEANNE HALLS SKIES IN WATERCOLOUR JULY WORKSHOP

I found Leanne's workshop to be brilliant and informative. She is such a generous knowledgeable and gifted artist. I learnt so much about how to paint clouds and sky in general. Her use of colour and how to take advantage of negative space was invaluable. I look forward to further workshops with Leanne.

Carolynne Rumble

And heads up for the summer ...

*We are fortunate to have Gemma Black hosting in December,
one of her last workshops during her much anticipated
exhibition for the month.*

AND John Lovett in the New Year

Notices

REPORT ON JUNE WILSON'S AUGUST PASTEL WORKSHOP



'We were very lucky to have the delightful and very knowledgeable June Wilson deliver a workshop to pastellists. We were all inspired and are looking forward to June delivering more workshops next year.'

Jane Battaglene

ARTlands at the Church

A weekend celebrating
ART

Saturday 14th and Sunday 15th October 2023

You and your guests are invited to join us over the weekend to celebrate the Artlands exhibition in the church. Refreshments will be available at the licensed pop-up café in the church hall.

**10am to 4pm at St Mary's Community Church,
122 Main Street, Kempton.**

**Exhibition Opening and talk by Terrence Gough OAM
at 11am Saturday 14th October 2023**

Lower Midlands Arts



email; artlandskempton@gmail.com

enquiries Secretary; 0412 903 944



The Botanical Art Group meets in the Lady Franklin Gallery on the 1st and 3rd Mondays of the month, from 10am to 2pm.

This is an untutored group of very experienced artists who meet to work together and share their love of all things botanical.

There is limited space for more artists with similar interests to join them.

Please contact Sandra Cumming,
sdcumming@bigpond.com for more information.

A SENSE OF PLACE
People's Choice Award
Winner

Lindy Whitton
for her acrylic
'Early Morning kunanyi'



Roger Imms donations.

Space is limited and libraries regularly make room for more relevant and current books. This has been done recently with some great additions from the Imms collection.

The last of Roger's generous donations we either already have or can't accommodate and are now displayed in one of the glass cabinets in the LFG kitchen. When we have a spare hour or two we will be marking them with a free or price indicated sticker for you to view and take or purchase.

It will be an honour system and you may pay at the desk.

EDITORS CORNER

Thanks again to all contributors for this spring edition featuring our amazing 139th Annual. Hoping to see more of your reports, articles, suggestions, achievements or art happenings to enhance the next Gallery News.

Apologies to those offerings that didn't make it this time due to the Annual Exhibition inclusion.

*The **last week in November is the deadline.***

*Send to: **www.artstas.com.au** or **csmeech@bigpond.com**
email if you would prefer to change and receive a printed copy of the newsletter*

Susie Meech

Artist Profile - Wendy Galloway

I was delighted when Wendy accepted our invitation to do an artist profile for Gallery News having been a fellow Art Society member for many years and sharing her love of bushwalking in Tassie. With her generous encouragement and sharing nature, Vicki and I both agreed she was the perfect victim.



"Art has been part of my life ever since I can remember. The major media sequence has been: drawing, watercolour, oil, pastel, coloured pencil, acrylic and mixed media. Some are revisited many times in various ways. While I have no tertiary art qualifications, I have attended many great workshops and courses and I feel happy with that approach. I now call myself a landscape inspired multi-media artist. If it makes a permanent mark, I will use it. I enjoy incorporating collage and if I can get randomness and chance into things that's great. I create my art in my home studio, where I have a large painting wall. There still isn't enough space though!

It seems that I can't settle on one direction in my art and I like that. It means I can experiment more and follow enticing leads. Often, I go back to basics, when I'm feeling lost, rusty, or just think it's a good idea. This year I've been doing an online course called Mastering Composition with Ian Roberts. It's mainly based on landscapes, but not to the exclusion of other subjects. (His book "Mastering Composition" is in the AST library.) My realistic painting experience is negligible and while I can manipulate colour in coloured pencil, paint is different. The same goes for picking up a brush after using pencils exclusively for a good few years. Realism versus abstraction is also a nice challenge.

It's commonly stated that process is more important than product. Nine times out of ten, I'm not very fond of my "product" and, as I've recently discovered, neither are some other artists who are way more successful than most of us could ever hope to be. So, I guess that leaves me with enjoying the process.

Luckily, I love how you can start out with the seed of an idea, or even no idea, and work your way forwards via choices and accidents. Often the result of it all is to arrive at what could be an end point, only to be greeted with more questions and uncertainty.

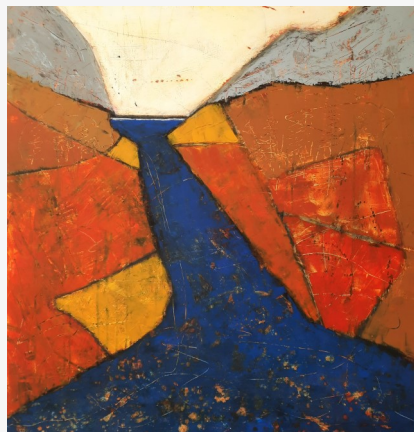
Artist Profile - Wendy Galloway

It's a process to which there is really no end! Along the way you get to learn, play, experiment, dream and imagine. Surprises of all sorts await the industrious artist, including failure and disappointment. But, everything in art can lead to more inspiration, one way or another.

I enjoy sharing my process and outcomes, however successful they may or may not be. There's always the chance of being inspired by others or encouraging others' creativity through my own experiences.

As a landscape artist at my core, I think I'm in the best place in the world. Tasmania offers so much inspiration for an artist connected to the landscape. It's difficult to know where to start. One of my favourite things about Tasmanian landscapes is the moody, atmospheric weather we get, particularly in our wild mountainous areas.

A logical progression for a landscape loving artist is to work en plein air, which I do on a regular basis. There are three ways I like to work outside. The first, and most used is sketching, either with graphite, or fountain pen and a water brush. Another way I like to work is to take my big soluble graphite stick, a few acrylic tubes and water, and literally slap things about on paper to get down my feeling or impression of a place, nothing realistic about it. I turn them into cropped compositions and collages – a mine of inspiration. This year, during the course I've started to paint more realistic acrylic sketches en plein air as well. There's another thing I like to do when travelling in a vehicle, any vehicle will do! I draw scenes as they flit past the window. I think it's helped me see the bones of what I'm trying to capture. There's no time for much else. For this I use my fountain pen, and the water brush, if there's time between inspirations!



Artist Profile - Wendy Galloway

Susie said funny stories are welcome so Years (decades) ago, I was sketching up at St Helens, near a jetty, when a young boy approached. He asked if I was an artist. I tentatively replied that I was. Later, he returned to offer me part of their fishing haul. I'm not sure if it was youthful wisdom predicting probable "starving artist" status or not! Anyway, I thought it best to let him keep the fish.

After saying that I like uncertainty, randomness and chance in the actual creation of my art, it sounds silly to say I'm not keen on the overall uncertainty. (Although, it can be exciting at times.) Have you ever thought about how much uncertainty we artists deal with? Uncertainty about what we're doing now, what we will do in the future and how it might all be received. Or, do we even like our own work? Worst of all there are those lulls in inspiration, periods when we wonder if our art has up and left and we don't know if it will return. Some people say it's part of the creative cycle.



An artist said recently online that she sees these times as the break between one thing and a new one that is waiting to come forward. A time to be open, experiment and investigate!

In closing, I was recently asked what are the three best ways to build my skills. They would be: **Practice**, (keep at it), **other art/artists**, (I don't think we do as well in a vacuum) and **what if?** (have a continually questioning art mindset, like an annoying toddler!) You never know, it might bring that elusive childlike quality to your art! "

Wendy Galloway



Some new food ideas for openings



A happening seen on the south coast of NSW. A yarn bombed light-house in Kiama. Stitched around its edge were the words, "decisions about what is vandalism and what is art is made by public servants - how ridiculous." It was proudly on display for 3 months.



SQUARE

People's Choice Award
Winner

Kevin Smith

for his photo
'Disappearing Tarn with
Mona Spectra'



September opening - Scene Through the Lens



At the opening of this show, which featured images of the Tasmanian landscape as well as picturesque scenes from travels overseas, Wendy Kennedy reminisced about how time spent capturing her own images overseas gave her a new appreciation of the Tasmanian landscape. "Here there's no need to drive miles - we have a tempting composition around every corner!" she said. She was impressed with the way the work of four photographers came together in such a harmonious way and also congratulated the curator, Carol Sheppard, on a masterly job.



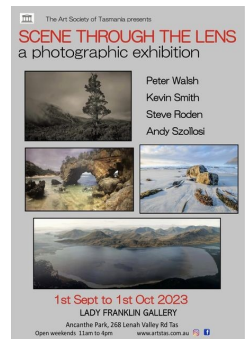
Peter Walsh



Steve Roden



Kevin Smith

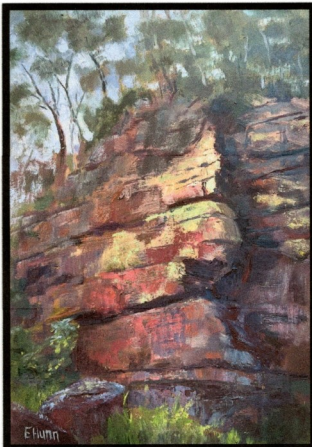


Elizabeth Hunn & Kaye Volkman



Love This State

The title for our exhibition embodies both our love of Tasmania and how much joy painting brings to our state of mind. Whether it be how the light plays on the landscape, dances on water or how it touches gently the every day things in our home giving them fresh significance.



Exhibition to be opened at the Lady Franklin Gallery by:

Lara Giddings

Friday, 3rd November at 6pm.

Lady Franklin Gallery,
268 Lenah Valley Road

Opening hours: 11am to 4pm each
Saturday and Sunday during
November.



www.artstas.com.au

Art Society of Tasmania Inc.

The Boats of Humanity

A letter to you dear Friends,

It was a sad time when my partner David and I made the decision to leave our adopted home Tasmania and moved north to be closer to family and all that that entails. The hardest thing was leaving our friends.

Though I'm not a Tasmanian by birth my great-great grandfather John Barclay McLaren soap manufacturer of Scotland emigrated to Australia on the barque *Othello* arriving in Hobart Town on 18th February 1834. To this day many of my McLaren cousins still live and work on my much loved once island home. Many landmark places were owned and run by my McLaren forbears such as the old *steam & wind flour mills* at both Oatlands and Jericho until my grandfather Reg, the thirteenth child of thirteen, moved north start a family on the mainland.

It was indeed my cousin Alex McLaren (*polymath & photographer*) who some of you will remember fondly, who supported my application to become a member of the AST. If he were alive today, he would be so very proud and happy for me that I will visit you all in December this year and bring a body of work with me upon invitation to mount and present as a solo exhibition. My heart leapt at Vicki Chapman's invitation as I blubbered through tears down the phone-line my gratitude and acceptance. I look forward to seeing everyone and appreciate this marvellous opportunity.

As an artist I firmly believe it is my job to tell the story of my own time whether true or imagined, whether real or in an abstract way. As a calligrapher and abstract watercolourist my intention is to bring to you a body of work that encompasses both lettering and painting complementing each other becoming one whole. More and more as I age the fickle nature of human beings saddens and angers me. I find myself like many of you, I am sure, feeling that there is no way out for those in trouble, danger, war, famine, or the relentless battering of those less fortunate in our society. How can one person help? My cousin Alex once told me he too felt helpless but that he firmly believed in humankind and that we will find a way through to recognise and end suffering of others.

My small contribution to that end I hope may be seen in my works, a series called **"The Boats of Humanity"** citing the Preamble and the thirty articles of the Universal Declaration of Human Rights in this it's 75th anniversary year.

Adieu dear Friends, until December then

Gemma Black


Canberra, May 2023

Exhibition Notices

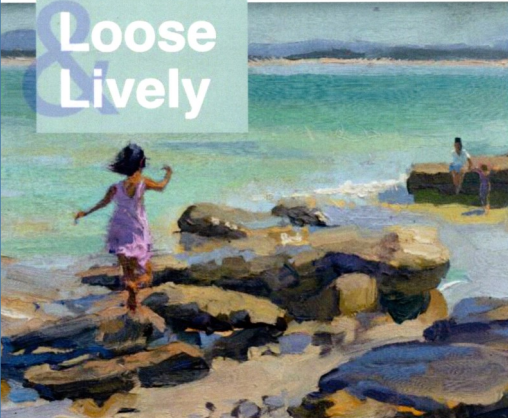
OCTOBER EXHIBITION

Members
Exhibition

**Loose
& Lively**





The Art Society
of Tasmania



Rick Crossland: 'Rock Hopper, Dodges Ferry', 2021, oil on board

7TH OCTOBER - 29TH OCTOBER 2023

Lady Franklin Gallery
Ancanthe Park
268 Lenah Valley Rd
Open Weekends 11am - 4pm



Exhibition opening 6th October at 6pm by Fiona Verdouw

NOVEMBER EXHIBITION



*The Art Society invites you to
A feature artists exhibition*

**by Elizabeth Hunn
and Kaye Volkman**

Love This State



**Sat November 4th to 26th
2023**
Opens Friday Nov 3rd 6pm

Lady Franklin Gallery
268 Lenah Valley Rd
weekends 11-4 www.artstas.com.au

DECEMBER EXHIBITION

*The Art society invites you to a feature solo artist exhibition
by calligrapher, **Gemma Black***

"The Boats of Humanity"



Sat 2nd December 11am to January 7th 2024

 **LADY FRANKLIN GALLERY**
Ancanthe Park Lenah Valley Rd - Open weekends 11-4 www.artstas.com.au  

SPONSORS

Please support our sponsors who support us!



Lauder and Howard

Antique Store

185 Campbell St Hobart
(03) 6289 6946

Phil's Framing
Margate phn 0447 413 332

Picture it Framed 289 Main Rd, Glenorchy.
Jeremy 6272 7933 / 0413 532 822
15% discount on complete framing



Just Frames



Andrew Peters from **JUST FRAMES** is offering a **10% discount** to members
22 Main Road Moonah